

VZ-3 Visualizer Systems



Driving the Creation of Knowledge

VZ-3 and VZ-3s Desktop Visualizer Systems



WolfVision is a worldwide provider of products and services to leading universities, businesses, schools, and other organizations. An acknowledged 'technology leader' in the Visualizer and presentation solutions market, WolfVision is the company that takes the lead, setting standards worldwide for innovative, reliable, user-friendly, high performance presentation solutions.

WolfVision's entry-level VZ-3 and VZ-3s systems feature a unique new eye-catching design where the camera, light system and electronic hardware are integrated into the Visualizer arm, and include all the standard features that every user requires. The VZ-3s is the same unit as the VZ-3, except that it is supplied without a working surface. Instead, it features a unique space-saving 'swivel plate' which attaches directly to a tabletop or podium surface, providing even greater installation and integration options.



Our extensive knowledge and expertise across all application sectors enables us to offer comprehensive consultative guidance on customized combinations of Visualizer and camera hardware, software, and accessories, which enhance communication, collaboration, and knowledge sharing across all environments. As part of each individual ✓Solution we offer not only pre-sales advice, but also post-sales support, training and service, ensuring that you receive maximum benefit from your investment.

Driving the Creation of Knowledge. Since 1966.



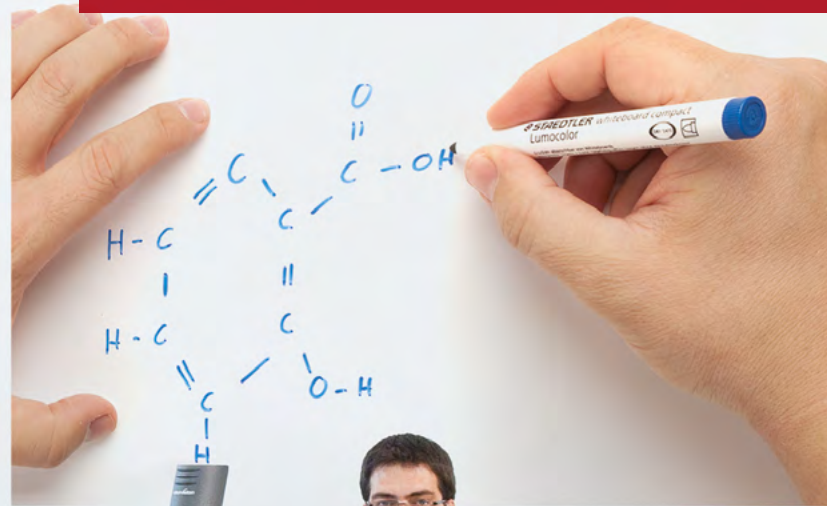
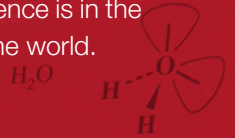
reddot design award
winner 2012

Our Vision

When you've got something to say, we believe it is important that getting your message across and making an impact should be as easy as possible.

Our aim is to help you to explain it better, to give you the freedom to share your knowledge and collaborate with others - however you want, and whenever you want, when your audience is in the same room or on the other side of the world.

angular)
**Because knowledge matters -
to all of us.**



High Performance Imaging

WolfVision Visualizers are well-known for their unrivalled imaging quality, which is due to the perfect combination of high quality components and remarkable expertise. Our systems deliver high resolution throughout the entire picture, true-to-life colors, and consistently high frame rates to ensure smoothness of motion. They have fast and accurate autofocus and zooming, giving high quality dependable results every time! High end lenses provide distortion-free images, and high tech lighting systems deliver smooth and consistent lighting without distracting reflections or hot spots.

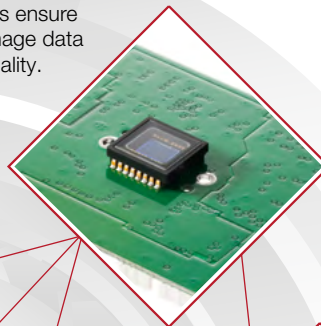
High End Optics

Large premium quality lenses provide unrivalled imaging performance.



Image Sensor

WolfVision's high resolution image sensors ensure the capture of image data of the highest quality.



Light System

A high-brightness LED lamp with low power consumption provides smooth and consistent lighting for accurate color reproduction.



Electronic Hardware

High quality components deliver high performance, stability, and reliability.



Software (Firmware)

Sophisticated software maximises the hardware potential to guarantee excellent picture quality.



++ Video ++

Key Features

Large Zoom Range

A large optical zoom range is one of the most important features of a Visualizer, because only an optical zoom can pick up objects in full resolution.

WolfVision's 12x optical zoom picks up objects as large as an open book or as small as a postage stamp in full size to fill the screen. For enlarging even smaller objects the Visualizer also offers 2x digital zoom.

Easy To Use / Zoom Wheel

For standard operation users only need to use the zoom wheel on top of the camera head as all other controls such as focus, brightness, etc., are adjusted automatically.

Dry-Erase Working Surface

Optional dry-erase working surfaces are available for the VZ-3 Visualizer. This enables a speaker to write directly onto the working surface during a presentation, enabling the Visualizer to be used spontaneously as a whiteboard or "digital flip chart."



Adjustment-Free Light System

The light system is optimized for the working surface, so there is never a need to make any light adjustments. It has an extremely long lifetime of 30,000 hours, which can be considered as maintenance free for most installations.

Powerful High Resolution Camera

WolfVision's VZ-3 Visualizer systems feature a high definition 1-CCD camera with 30 frames per second and sRGB color precision. They can output native resolutions in SXGA-, WXGA, and 720p HD formats.

Anti-Theft Devices

The VZ-3 Visualizer has two anti-theft devices. There is a thread on the bottom of the working plate for attaching the unit to a table with the supplied table lock bolt (VZ-3 only). Additionally, T-Lock (Kensington® Lock) devices can also be used.



reddot design award
winner 2012

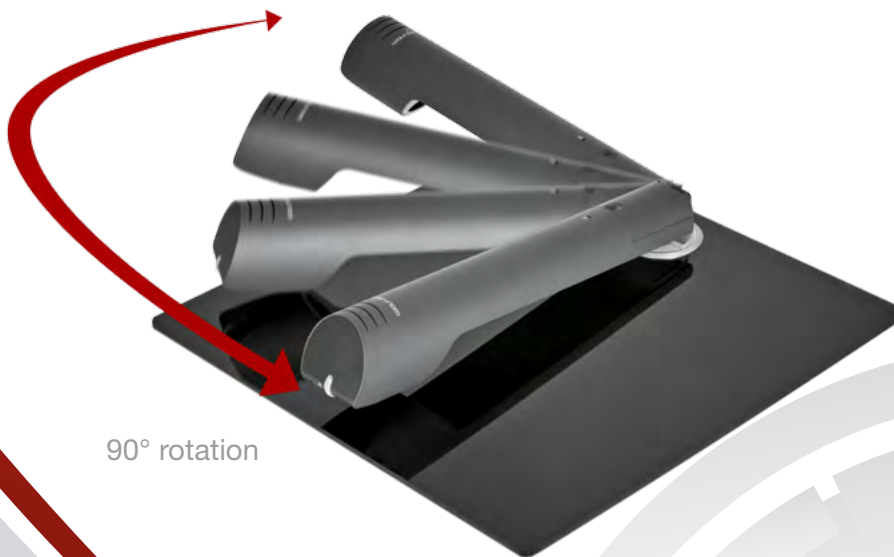
VZ-3s - Space-Saving Imaging Solution

Flexible Installation

The VZ-3 Visualizer is a highly compact and portable system which can easily be used to serve a number of different rooms. The VZ-3s is the exact same unit, but it is supplied without a working surface and is designed to be used as a fixed installed unit.

The VZ-3s can be mounted directly onto a desktop or podium using the supplied 'swivel plate' which gives the added advantage that the unit can be rotated sideways through 90°. This facilitates easy storage and keeps the desktop surface area completely obstruction-free.

The VZ-3s is particularly useful if there are space restrictions, and it provides an additional installation option if the system is required to fit into a particular room design. It is the ideal solution if the unit is to be installed on a podium.



++ Video ++

Flexible Connectivity Options

External Controlling

The VZ-3 and VZ-3s can be controlled from external devices, such as a room control system, a videoconferencing system or a computer via USB and LAN connections. Older devices with Ser-

ial RS232 port can be connected using a Serial-LAN adapter from other manufacturers. The functionality of the LAN port is limited to controlling and Firmware updates.



Creating Unique Multimedia Presentations

During a presentation, the External key of the Visualizer can be used to switch between Visualizer images and computer images from a PC that is connected to the ex-

ternal input of the Visualizer system. There is no need to use a separate remote control from a projector or monitor in order to switch image sources.



✓Solution Control for Smartphones

The vSolution Control app enables iPhone, Windows 8, Windows Phone 8 or Android devices to connect to VZ-3 and VZ-3s Visualizer systems via WLAN. This intuitive and easy-

to-use app allows presenters to use the device keypad and Live Image Preview to control presentations or lectures wirelessly from anywhere in the room.



✓Solution Link for PC and Mac

vSolution Link allows a user to connect a computer directly to a VZ-3 or VZ-3s system. The software allows for saving, printing and emailing of images, recording of videos, adding annotations and video streaming. It also provides useful tools for automatically applying firmware updates, which

helps to extend the life of your investment, and allows new features and technical improvements to be added at no cost!

Technical Data

	VZ-3	VZ-3s
Technology	Progressive Scan	
Camera	1-CCD 1/3"	
Pictures per second (as picked up by the camera)	30 frames (in all resolutions)	
Effective Pixels (=pixels actually used for image information)	1280x960 (=1,228,800)	
Total pixels of CCD(s)	1,320,000	
Pixels processed per second (=effective pixels x frames per second)	36,864,000	
Color reproduction / precision	very good colors (sRGB color precision)	
Native signal output	SXGA- (1280x960), WXGA (1280x800) and 720p HD (1280x720)	
Converted output signals (4:3 and 5:4)	XGA (1024x768)	
Converted Widescreen output signals (16:9 and 16:10)	WXGA (1360x768)	
Resolution (measured)	710 lines	
Brightness control	automatic (manual in on-screen menu)	
White balance adjustment	automatic and manual	
Autofocus / Speed	yes (continuously working, high speed)	
Manual focus	yes	
Shutter	auto, manual, flickerless	
On screen menu and on screen help	yes	
Firmware Updates via	USB, LAN	
Zoom / Lens	24x zoom (12x optical + 2x digital), with 2-speed zoom wheel	
Max. object height on working surface	60mm (2.4") in tele position 320mm (12.6") in wide position	
Max. pick-up area on working surface	length: 300mm (11.81"), width: 400 mm (15.75")	
Min. pick-up area on working surface (in full resolution with optical zoom)	33x25mm (1.3" x 1")	
Min. pick-up area on working surface (with digital zoom)	17x13mm (0.7" x 0.5")	
Depth of focus on small object (42x33 mm)	10mm (0.4")	
Depth of focus on large object (360x270 mm)	260mm (10.2")	
Blinding of audience or speaker	none	
Light source	LED light system	
vSolution Link (USB/LAN, for controlling, image and video capturing and firmware updates)	included (for 32- and 64-bit Windows and Macintosh, Twain/WIA compatible, with video capture driver)	
Intelligent folding system	mechanical arm	
Special working surface for transparencies	yes	no
Swivel plate with 90° rotation	no	yes
Slide pick-up	with optional lightbox	
Bottom light	optional external lightboxes	
External computer input / Input switch	yes (15-pin D-Sub/VGA plug)	
Image memory	1 image freeze	
Alternative Image display	text enhancer / negative image / negative-blue image / black and white image	
RGB output	via DVI to VGA/RGB cable or adapter	
DVI output	DVI-I (digital)	
HDMI output	when using a DVI-HDMI cable	
USB standard / port	Mini-USB 2.0 Device-Port	
Ethernet / LAN port, IP-addressable	for controlling and firmware updates only	
RS232 port	no (if required external LAN to RS232 adapters can be used)	
Weight	3.5 kg (7.7 lbs)	2.08 kg (4.6lbs)
Operating temperature / relative humidity	0°-40°C (32°-104°F) / 40-60%	
Anti-theft devices	T-Lock (Kensington® Lock) and table lock bolt	T-Lock (Kensington® Lock)
Power	External power pack: multi range 100-240 V, 25.5W, power consumption 19.2W, Power over Ethernet plus (IEEE 802.3at standard)	
Warranty	5 years	

All units made in the European Union (Austria)

Design and specifications subject to change!

Printed in Austria, November 2015

Your WolfVision Partner:



Head Office:

WolfVision GmbH
6833 Klaus / Austria
Tel. +43 5523 52250
wolfvision@wolfvision.com

Japan Sales Office
WolfVision Co. Ltd.
Tel. +81 3 6233 9465
wolfvision.japan@wolfvision.com

USA Sales Office
WolfVision, Inc.
Tel. +1 770 931 6802
sales@wolfvision.us

Middle East Sales Office
WolfVision Middle East (Dubai)
Tel. +971 354 2233
middle.east@wolfvision.net

UK Sales Office
WolfVision UK Ltd.
Tel. +44 1628 509 067
wolfvision.uk@wolfvision.com

Canada Sales Office
WolfVision Canada, Inc.
Tel. +1 613 741 9898
wolfvision.canada@wolfvision.com

Asia Sales Office
WolfVision Pte. Ltd. (Singapore)
Tel. +65 6636 1268
wolfvision.asia@wolfvision.net

Germany Sales Office
WolfVision GmbH
Tel. 0800 9828 787
wolfvision.deutschland@wolfvision.com

